

Your Child's Health Needs in Special Schools in Derbyshire

Many Young People attending Special Schools in Derbyshire will also have additional health needs which may require support from:

- Public Health Nursing (School Nurses)
- School Doctors/Community Paediatricians
- Learning Disability CAMHS
- Speech and Language Therapists
- Occupational Therapists
- Physiotherapists
- Children's Community Nursing



This is not an exhaustive list, but these are the most common examples. These will be provided by teams in the North or South of Derbyshire. All professionals in teams will work slightly differently, dependent on their profession and what is appropriate for the young person. For some this will include individual work, but predominantly we will work with school staff to enhance the environment and care. This leaflet gives further information on the healthcare support available for your child through their school.

Public Health Nurses (School Nursing)



The School Nursing service leads and delivers the Healthy Child Programme for 5-19 year olds, working predominantly with children, young people and their families. We are part of the 0-19 children and young people public health service, with Health Visitors and work closely with other services, including schools, to ensure that the child's health needs are met. We are skilled in spotting health problems or concerns early, so that we can provide early support. We work with other services to ensure each and every child and young person is able to reach their full potential both in and out of school.

The School Nursing service is responsible for delivering public health programmes and interventions to improve health outcomes for children, young people and their families. The Healthy Child Programme is a programme for children, young people and families which focuses on early intervention and prevention and offers research based guidance on development reviews, immunisations, screenings, and healthy choices.

School Nursing teams offer a confidential health service with core contacts including:- Health assessment in both reception and year 6, screening of height, weight, vision and hearing in reception and year 6, national child measurement programme, contact at year 8 and a health review in year 10. They support the physical and emotional health and wellbeing of children, young people and families, and can give advice on healthy choices, e.g. healthy eating, dental health, sexual health and substance misuse. They offer health reviews to ensure that every child continues to reach their full potential by promoting optimal health and wellbeing for all children and young people, and then work in partnership with outside agencies if needed. We work with schools to help them achieve their 'health school's community award'.



Contact Details



North Derbyshire

Learning Disability CAMHS	—01246 514412
Occupational Therapy, Physiotherapy and Speech and Language Therapy	—01246 514621
School Doctor Service	—01246 516101
Public Health Nurses (School Nursing)	—01246 299933
Children's Community Nursing	—01246 514563

South Derbyshire

LD CAMHS	—01332 291794
Speech and Language Therapy	—01773 525079
Occupational Therapy, Physiotherapy	—03001234586 (option 2, then option 5)
Community Paediatric Service	—01332 623704
Public Health Nurses (School Nursing)	—01773 525059
Children's Community Nursing KITE Team	—01332786807

Local Offer—<http://www.derbyshiresendlocaloffer.org/>

Children's Community Nursing

North Derbyshire

The Children's Community Nursing Team visit children in Special Schools by arrangement with the child's carers, and/or at the request of the school staff.

This may be about problems with pressure areas, gastrostomy, feeding devices, stomas, breathing problems, epilepsy or continence. They may be involved in working out plans of care in school and training for staff.



South Derbyshire

The KITE Team are the Children's Community Nursing Team based at the Royal Derby Hospital. We provide a service for children and young people with complex health needs requiring nursing intervention (for example: enteral feeding, tracheostomy care and oxygen dependency).

Our aim is to support children and young people and their families through training and education, telephone advice, clinical care and liaison with other services in order to enable them to remain well and out of hospital wherever possible.

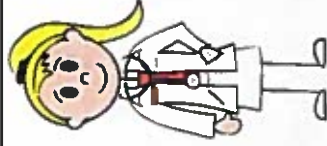
If appropriate, the team will visit a child or young person at school and are happy to offer advice to school staff if needed, regarding the child or young person's health needs. The team are available Monday-Friday 8am-6pm and Bank Holidays 9am-5pm.

School Doctors/Community Paediatricians

North Derbyshire

The school doctor service to special schools in North Derbyshire runs alongside the Child Development Centre and Community Paediatric service, provided by Chesterfield Royal Hospital. Many children in Special Schools will need provision from both services. All the Special Schools have an allocated School Doctor, who helps with assessment and management of school-based medical issues. Clinics are run within the school environment.

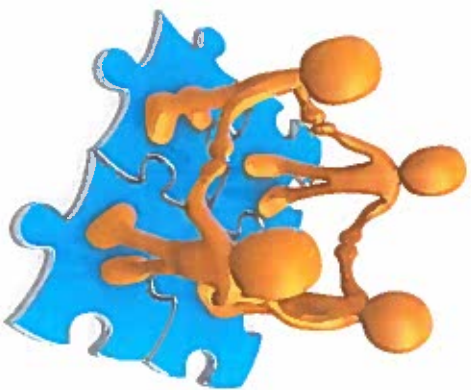
The School Doctor will work as part of a team with the school nursing staff and school based therapist, as well as with the paediatricians at The Den. They are involved in providing medical advice for Education, Health and Care Plans (EHCPs) and contribute to annual reviews and other school meetings. They can help coordinate the care of children and young people with complex needs, and make onward referrals to other services as necessary. They provide a consistent medical point of contact for school staff.



South Derbyshire

The Community Paediatric service is a specialist service in South Derbyshire. Every special school has a community paediatrician locally. Your child may be referred by the school nurse or school staff or GP with your consent. We assess children with a range of problems, including general medical problems, delayed development, behaviour problems and complex disability. We can arrange medical tests if need be. We work closely with other professionals. We give advice to Education when your child is assessed for an Education, Health and Care plan.

Further information: <http://www.derbyshirehealthcareft.nhs.uk/services/childrens-services/community-paediatricians>



LD CAMHS provides a Link Worker into each of the Special Schools within Derbyshire, who have a high proportion of children with moderate and severe learning disabilities. A Link Worker is a clinician who regularly visits school and contributes to planning. They may also offer staff consultations, pupil observations, and training around mental health issues and positive behaviour support; in line with each school's requirements. The Link Worker role helps to promote a joined up approach between health and education.

LD CAMHS also provides regular Psychiatric Clinics within a number of Specialist Schools in Derbyshire, where appropriate. The purpose of these clinics are for the LD CAMHS Consultant Psychiatrist to meet with the child's parent(s)/carer(s) and teaching staff, to assess and review mental health symptoms, and prescribe and review medication.

If appropriate, the young person can also join the appointment, even if for a short time. This way of working has been designed to minimise stress and travel time for everyone involved.

Finally, teaching staff in Special Schools can make direct referrals into LD CAMHS, on behalf of parent(s)/carer(s), where the child is presenting with mental health symptoms / challenging behaviour across home and school environments. Once a referral has been accepted, the LD CAMHS case holder liaises closely with the child's school, so that they can develop an understanding of how the child functions within their school environment.



South Derbyshire

Paediatric Physiotherapy Teams working in Special Schools across South-ern Derbyshire include qualified staff and support staff, who may assist in meeting your child's physiotherapy needs.

Physiotherapy provision is on an individual needs basis. Following a thorough assessment of your child's needs and abilities, our staff will work closely with the young person, families, school staff, other therapy services, short breaks services and manual handling advisors. We will agree functional goals in partnership with you and your child, and work together to achieve these outcomes.

Young people may be provided with activities for completion at school and at home. This may include acquisition of gross motor skills, mobility education e.g. use of walking aids and wheelchair skills, strengthening and stretching exercises, use of 24 hour postural care (including seating, sleep systems, standing frames and orthotics/splints) and development of "a therapeutic day" to enable them to access curriculum or leisure opportunities.



Physiotherapy

North Derbyshire

Each Special School has a named Physiotherapist. The Physiotherapist assesses and reviews the needs of the child/young person at school/home/short breaks provision. Individual programmes are developed in collaboration with the child and family, school staff and other professionals.

The Physiotherapist plays an active role in supporting the MOVE (Movement Opportunities Via Education) physiotherapy programme in school, to help achieve the MOVE targets.

The Physiotherapist works closely with the Occupational Therapist to measure and monitor body shape and range of movement. These and the identification of destructive movement patterns and postures, helps to guide the provision of supportive equipment. The Physiotherapist is responsible for the provision of orthoses, standing and walking equipment.

The Physiotherapist provides training to the family and key carers in other settings, to carry out the programme safely and effectively. This may include stretches, strengthening exercises, movement practice, positioning, gross motor skill practice. This is threaded into the child's daily routine. In Special Schools, staff of all levels play a role, both in the pool and classroom.

The Physiotherapist and Occupational Therapist offer annual training to the Special Schools to provide a baseline of understanding about postural management, titled 'Comfortable Learning'.

Speech and Language Therapy

North Derbyshire

The Speech and Language Therapy Service provide a named therapist for each Special School. We offer assessment and therapy recommendations for children with speech, language, communication needs (SLCN) and/or eating and drinking difficulties, who meet our referral criteria. Based on the outcomes of the child's assessment, the following provision may be offered:

- A targeted therapy programme shared with school and parents/guardians for integration into everyday communication opportunities.
- Targeted advice shared with school and parent/guardians to promote a safe eating and drinking environment.
- Some children/young people may require periods of specialised therapy programmes with agreed outcomes and timescales. This is led by the Speech and Language Therapist, in partnership with the school and parents/guardians.
- The Speech and Language Therapy Service offer coaching to the school staff to promote communication enriched environments.
- The Speech and Language Therapy Service offer an annual eating and drinking awareness session to school staff.

The Speech and Language Therapist may consult with other services such as Visual/Hearing Impairment Specialist Teachers and Dietitians where appropriate.

South Derbyshire

Speech and Language Therapy (SLT) services are provided for children with Speech, Language or Communication Needs (SLCN) who meet our core service criteria. Provision may include; assessment of SLCN, and therapy with an agreed outcome and timescale. Clinical decisions are made based on impact of SLCN, capacity to change, motivation, prognosis, environment and involvement of other agencies.

Some special schools commission additional provision bespoke to their setting. This might include direct SLT input for children who do not meet core caseload criteria, support to develop a communication- friendly environment in school and bespoke training for school staff.



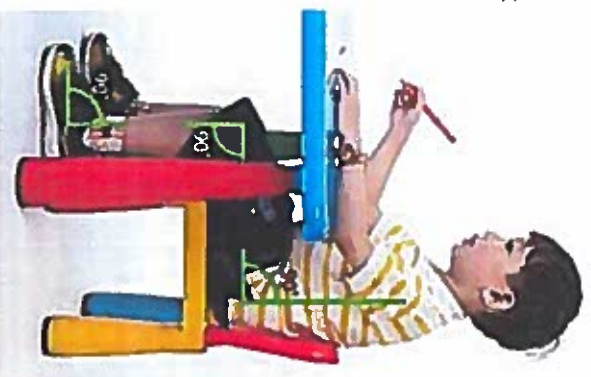
Occupational Therapy

North Derbyshire

The Occupational Therapist works with children in a school, home and clinic setting. There is an Occupational Therapist who acts as named contact for each special school, this helps establish close links with all caring for and working with the child. We work collaboratively with our Physiotherapy colleagues to provide a coordinated approach to postural management according to the child's individual needs.

Working together, we will assess, measure and advise on postural management. Occupational Therapy may also recommend provision of specialist seating and sleep systems, to protect body shape and improve function. This will be done to support the child's needs at home and school. The Occupational Therapist may also complete a short episode of targeted work with children who have a specific physical difficulty, in order to improve independence with activities of daily living.

All advice and recommendations will be discussed and shared with relevant staff at school, and those who act as carers outside this setting. This enables us to offer a consistent and child centred approach to the child's therapy needs, in order to achieve better outcomes.



Occupational Therapy

South Derbyshire

There are two Occupational Therapists who act as named contact for the Special Schools - Stanton Vale, Alfreton Park, Bennerley Fields, Ivy House, St Clares and St Giles. This helps establish close links with all caring for and working with the child / young person.

Not all children in special schools will need an Occupational Therapist. The service is available for children for whom a specific occupational need has been identified, and a written referral has been made to the service. We address goals that are important to the child and / or their representatives. We mainly provide an assessment and advisory service to the children, their families and the school. There is now a Technical Instructor as part of the team.

How we might help:

- Accessing table top activities – advise about furniture including special seating.
 - Manipulating toys and tools for learning – advice on developing skills or alternative methods.
 - Accessing the environment – advice on play equipment, alternative mobility equipment (wheelchairs).
 - Controlling the environment and toys- advice on appropriate assistive technology / environmental controls.
 - Developing self-care skills – advice on overcoming difficulties using cutlery; difficulties using bathroom facilities, problems with dressing etc.
- Our advice and support enhances each child's occupational performance and participation in their school day. We do this by:
- Empowering staff to integrate therapy advice within the curriculum.
 - Advising on appropriate enabling equipment and its use.

We work collaboratively with the child, parents and the wider school team, particularly speech and language therapy and physiotherapy, where indicated.